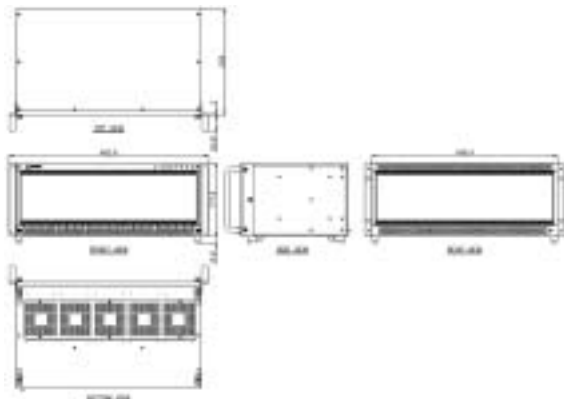


# cPCIS-2600 Series

Versatile 3U Platforms with Hot-Swappable Fans and Chassis Alarm



The cPCIS-2600 Series is designed for demanding applications, the needs of which cannot be met by passive backplane PCI systems. This sturdy, flexible, and versatile platform is ideal for desktop, benchtop or 19" rackmount configurations. The base card cage of the cPCIS-2600 provides a total 84HP (21-slot) space for 3U form factor CompactPCI or PXI modules. The space can be configured to accommodate, redundant modular power supplies, and front or rear panel I/O access. The built-in chassis alarm module can monitor internal temperature and cooling fan status. It will alert users if the system temperature exceeds a preset value or of fan failure. Front-access hot-swappable fan tray design makes chassis maintenance simpler and easier. The cPCIS-2600 Series is the ideal platform for test and measurement, instrumentation, traffic control, industrial automation, and mission critical applications.

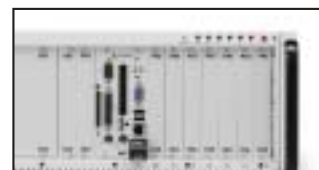


## General Specifications of Chassis

CompactPCI Standards	2.0 R2.0
Form Factor	3U cPCI with 50mm depth rear I/O
Enclosure	EIA RS-310C 19" 4U high rackmount enclosure
	Coated metal plate outer covering
	Guarded power switch and reset button
Alarm Module	Monitors inner chassis temperature and fan status
	Abnormal status will generate alarm and LED warning
	Alarm reset
Cooling System	LED shows power voltage status on 5V, 3.3V, 12V, and -12V
	Front-access hot-swappable low noise fan trays for intake:
	12V DC brush-less, ball bearings
	Five fan trays with 36.02 CFM/fan
	Rated speed for each fan: 2800 RPM
Rated power for each fan: 1.56W	
Power Supply	Optional industrial grade ATX power supply or PICMG 2.11 47-pin 3U cPCI power modules, depending on subsystem configuration
Backplane	3U backplanes, model dependant on subsystem configuration
Dimensions	448.4 x 177.8 x 258 (mm, W x H x D, excluding brackets)
Operating Temp.	0 to 60°C
Storage Temp.	-20 to 80°C
Humidity	5% to 95%, non-condensed
Shock	15G peak-to-peak, 11ms duration, non-operation
Vibration	Non-operation: 1.88Grms, 5-500Hz, each axis
	Operation: 0.5Grms, 5-500Hz, each axis, tested with 2.5" HDD



Front-Access Hot-Swappable Fans



Temperature, Voltage and Fan Monitoring LEDs



Redundant Power Supply

- 1 AdvancedTCA Products
- 2 6U cPCI SBC
- 3 6U cPCI Platforms
- 4 3U cPCI SBC
- 5 3U cPCI Platforms
- 6 SBC & IMB
- 7 Industrial Chassis
- 8 Computer On Modules
- 9 Network Appliance
- 10 IPC Accessories